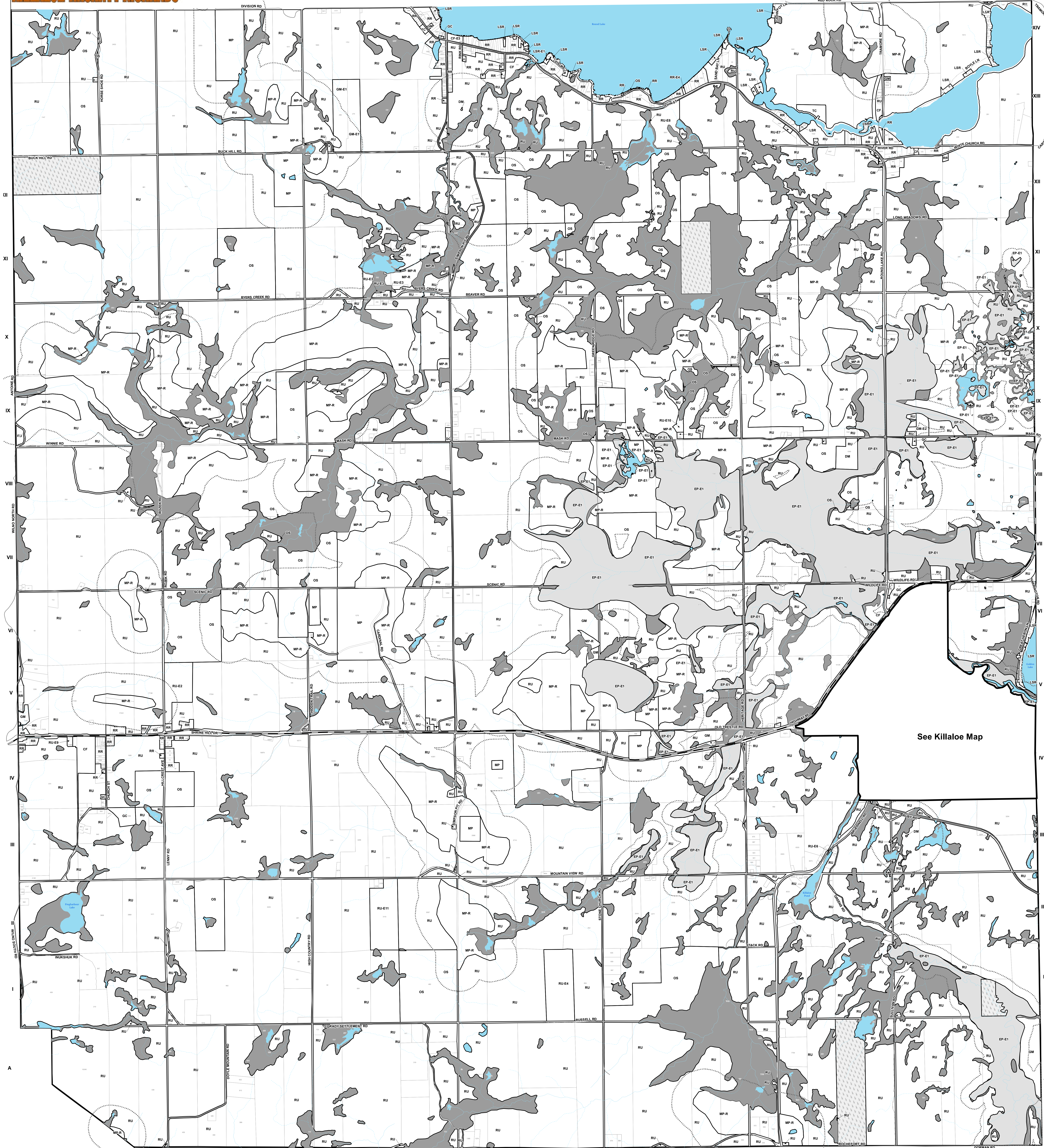




Naturally Spirited

# Killaloe, Hagarty & Richards Zoning By-Law Map 2 - Hagarty

**KILLALOE-HAGARTY-RICHARDS**



See Killaloe Map

- Provincial Highway
- County Road
- Crown Road
- Municipal Maintained Road
- Municipal Seasonal Road
- Private Road
- Intermittent - Watercourse
- Permanent - Watercourse
- CF - Community Facility
- Crown Land
- D - Development
- DM - Disposal Industrial
- EP - Environmental Protection Area
- EP-E - Environmental Protection Area - Exception
- E - Exceptions
- GC - General Commercial
- GM - General Industrial
- HC - Highway Commercial
- LSR - Limited Service Residential
- MSC - Main Street Commercial
- MP - Mineral Aggregate Pit
- MP-R - Mineral Aggregate Pit - Reserve
- Near Capacity Lake
- OS - Open Space
- R1 - Residential One
- R2 - Residential Two
- RU - Rural
- RR - Rural Residential
- TC - Tourist Commercial
- Water

\* Note

Zone	Feature	Required Minimum
DM	Waste Disposal Site	500 metres
EP-E1	Provincially Significant Wetland (PSW)	120 metres
EP-E2	Area of Natural and Scientific Interest - Life Science (ANSI)	120 metres
EP-E3	Area of Natural and Scientific Interest - Earth Science (ANSI)	50 metres
MP and MP-R	Sand and Gravel Resource and Licensed Pit	300 metres
MQ and MQ-R	Bedrock Resource and Quarry	500 metres

This is Schedule "A" to By-law No. 11 - 2024  
Passed on the 2nd day of April, 2024.

Signature of Signing Officers:

*David Meikle* Mayor  
*Tammy Sturgeon* CAO/Clerk-Treasurer

