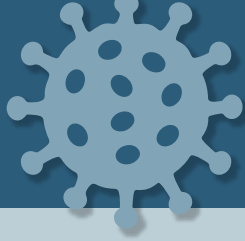




NOTICE

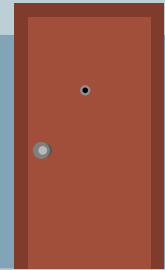
COVID-19



WHEN YOU CALL 9-1-1



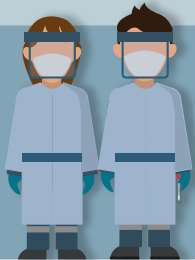
Paramedics will arrive and conduct a 2m assessment



Please do not approach them!



Using the provincial COVID-19 assessment tool, paramedics will ask a series of questions



Paramedics will determine what level of personal protective equipment they require based on your response to their questions



Please be truthful to paramedics about your symptoms

We are here to help. Help us, help you.



County of
Renfrew
Ontario . Canada

www.countyofrenfrew.on.ca

